

3D

DEFECTS DEFICIENCIES DATABASE

Stop time consuming collection of HSE data from various sources!

Use instead your valuable time for analysing meaningful reports from 3D, to identify improvement potentials.

3D (Defects and deficiencies Database) is a comprehensive repository for shipboard inspections. ChemServe has developed a database that allows a consolidated reporting of CDI, SIRE, Port State Control Inspections, Internal audits and Non Conformities. The results are shown in reports and graphs and are a perfect tool for performance measurement of Quality, Safety and Environment.

3D Features:

Repository for shipboard inspections and customer complaints

- CDI, SIRE, PSC, Internal audits, External audits, Superintendent Visit Reports, Terminal inspections
- Other shipboard events like incidents, accidents, damages, no compliances, customer complaints
- Customization of company inspection reports on request

Automatic import of CDI and SIRE inspections

Answering of inspection reports

- Warning in case of repetitive questions
- Previous answers to same observation
- Helps to achieve consistency in answering inspection reports

Follow up and Close Out of all deficiencies

- Overdue items report lists all deficiencies that need close out

Root Cause Analysis

- Initial Cause, Immediate action, Root Cause can be documented for every deficiency

Document Management

- All sorts of digital documents incl. E-Mails can be attached to deficiencies for complete documentation

3D is a client/server database

- The database server is hosted in a computing center and continuously updated by us.
- New or changed questionnaires are immediately available to the database clients.
- Multi user access possible without any restriction.

Online Help

- Integrated user manual that is always updated (visit www.3dhelp.chemserve.eu)

Database functionality is continuously enhanced

- Updates are automatically downloaded, if client connects with the database.

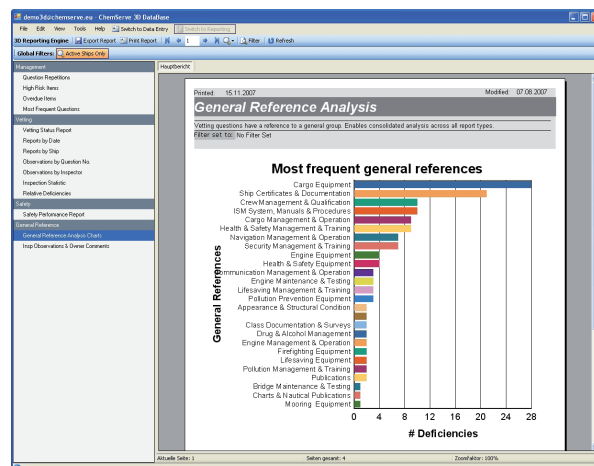


Abb. 01: Report General References. Questions in 3D are linked to 36 generic names. This indicates potential weakness areas.

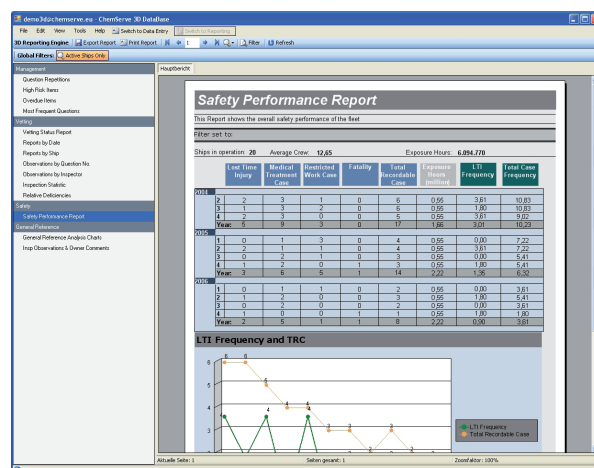


Abb. 02: Marine Injury Report. Automatic calculation of LTI frequency rate according to OCIMF guidelines

Free ONLINE-DEMO available!

For more information and to try our software, visit <http://www.chemserve-marine.com/3Ddemo>

Sign in for free and get access to

- Online-demo. No installation required. Online assistance available, if desired.
- Offline-demo for download. Database client must be installed.
- Free trial period with private database can be arranged

System requirements:

- Windows XP / Windows Vista / Windows 7
- Microsoft .NET Framework 2.0
- Internet connection

Abb. 03: Data Entry section. Example entry of a follow up target date of an open observation

Reports out of 3D:

The Reporting is integrated in the database client. The business intelligence application Crystal Reports is used to visualize the reports. ChemServe offers a set of standard reports. The reports are grouped by user type such as Management, Vetting etc.

An advanced Filter allows narrowing the reports according to the subject that must be analysed. Typical filtering application is filtering for certain Ship Names, Time frames, Report Types, Oil Majors etc.

Management Reports - showing the KPI's (Key Performance Indicators)

- Repetitive Questions
- High Risk Items
- Open observations/Overdue Items
- Most frequent Questions

Operations Reports - Reports showing many operational details

- Inspection grouped by Ship and by Date
- Observations grouped by Question No.
- Inspection Experience Sharing. Distribution of observations to fleet

Vetting Reports - Reports that support the vetting department

- Vetting Status Report. Oil major approvals. Inspection planning
- Inspector History. Beneficial tool for vetting inspection preparation
- Inspection Statistics

General Reference Reports

General Reference Categories allow a consolidation across many different inspection types such as CDI, SIRE, PSC, internal audits etc.

Safety Reports

3D produces a Marine Injury Report according to OCIMF reporting guidelines with automatic calculation of LTI and TRC frequency rates.

Additional special reports can be produced on your request

All reports can be printed exported to the MS Office Programs
Comfortable editing and modification is possible there.

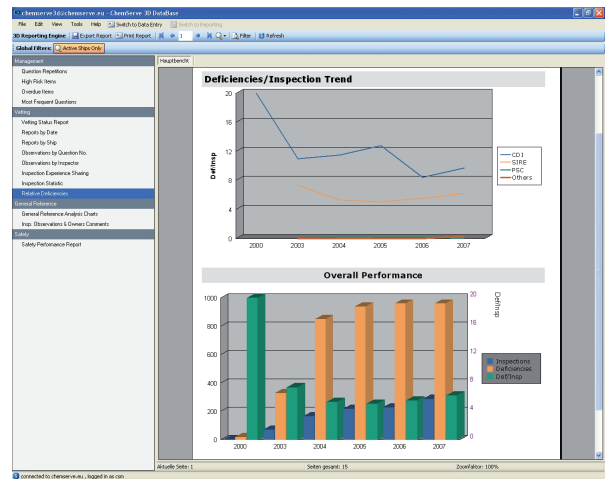


Abb. 04: Report Relative Deficiencies (sum of deficiencies / sum of insp.)

The screenshot displays the 'Vetting Status Report' table in the ChemServe 3D Database interface. The table lists various ship names and their corresponding vetting status across different categories.

Ship Name	CDI	SIRE	PSC	EDEN/MERIL	SHELL	BP
VESSEL EC	03.05.2007	01.09.2007	29.06.2005	15.06.2007	01.09.2007	01.09.2007
CDNO MGR1	Active	Evaluated	Not Delivered	Evaluated	Evaluated	Evaluated
ELSENWERE	01.05.2008	01.05.2008	01.05.2008	01.05.2008	01.05.2008	01.05.2008
VESSEL DK	24.12.2006	31.07.2007	04.08.2005	31.07.2007	31.07.2007	31.07.2007
CDNO MGR1	Active	Evaluated	Not Delivered	Evaluated	Evaluated	Evaluated
BURDACH	24.01.2008	31.07.2008	31.07.2008	31.07.2008	31.07.2008	31.07.2008
VESSEL PC	30.05.2006	23.03.2005	08.08.2006	08.08.2006	08.08.2006	08.08.2006
CDNO MGR1	Active	Not Delivered	Sires	Evaluated	Evaluated	Evaluated
WILSON	30.10.2007	08.07.2007	08.07.2007	08.07.2007	08.07.2007	08.07.2007
VESSEL QE	02.04.2006	01.08.2007	23.06.2006	01.08.2007	01.08.2007	01.08.2007
CDNO MGR1	Active	Evaluated	Not Delivered	Evaluated	Evaluated	Evaluated
ROTTERDAM	02.05.2007	01.08.2008	01.08.2008	01.08.2008	01.08.2008	01.08.2008
VESSEL TE	30.11.2006	08.12.2006	20.07.2006	08.12.2006	08.12.2006	08.12.2006
CDNO MGR1	Active	Active	Not Delivered	Active	Active	Active
ROTTERDAM	30.11.2007	08.12.2007	08.12.2007	08.12.2007	08.12.2007	08.12.2007
VESSEL XYZ						
CDNO MGR1						
VESSEL AC		18.06.2006	01.08.2006	01.08.2006	01.08.2006	01.08.2006
CDNO MGR1		Evaluated	Not Delivered	Evaluated	Evaluated	Evaluated
TRINITY		01.08.2006	01.08.2006	01.08.2006	01.08.2006	01.08.2006
VESSEL ABC		04.11.2007	04.11.2007	04.11.2007	04.11.2007	04.11.2007
CDNO MGR1		Not Delivered	Not Delivered	Not Delivered	Not Delivered	Not Delivered
VESSEL F		23.01.2006	23.01.2006	23.01.2006	23.01.2006	23.01.2006
CDNO MGR1		Not Delivered	Not Delivered	Not Delivered	Not Delivered	Not Delivered

Abb. 05: Vetting Status Report. One page overview of Oil Major Approvals for entire tanker fleet



3D IS USED CURRENTLY BY MORE THAN 30 SATISFIED SHIP MANAGERS!

ANDRIAKI BELCHEM SINGAPORE PTE CARL F PETERS CHEMGAS
CHEMIKALIEN SEETRANSPORTE COLUMBIA SHIP MANAGEMENT
CRYSTAL WATER NAVIGATION DORIAN HELLAS DORVAL
EMS SHIP MGMT ERNST JACOB REEDEREI ERRIA FINBETA
GENERAL MARITIME MANAGEMENT GOODWOOD SHIP
MGMT'S PORE HARTMANN HISTRIA SHIPPING JO TANKERS
KOKUKASANGYOSHIGMGMT LAURITZENKOSAN MARITIME
PERFORMANCES MEGA CHEMICALS NORDIC TANKERS
NIEDERELBESCHIFFAHRTSGESELLSCHAFT NORTHERN MARINE
MANAGEMENT OSM SHIP MGMT AS QATAR SHIPPING COMPANY
REEDEREI CLAUS PETER OFFEN SEARLAND WALLEM